

The NEW VIASS Pro² - Version 2021



**ON TOP
11mm rail**

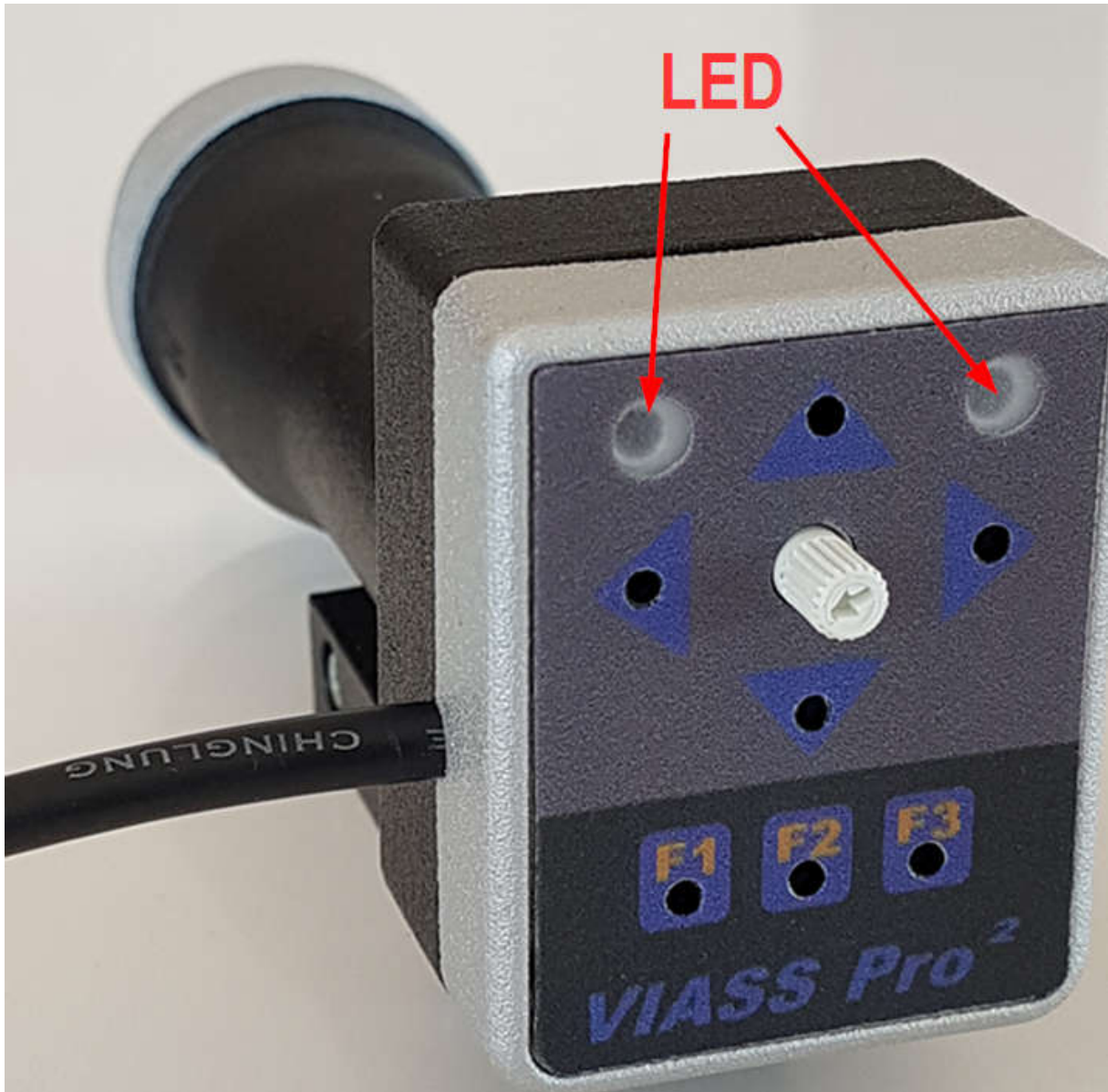
The new VIASS Pro² is smaller, faster, more precise, with additional functions

What has changed mechanically on the outside.

Size (WxHxL): 40x60x125mm

Weight without battery: 120 grams

New ON TOP AKKU 11mm mounting rail



What's new on the operating side:

All buttons on the operating side have recessed marking holes
to be able to feel the position better.

Green status LED

Red tilt LED

There is only the volume control on the operating side

Standard installation of the VIASS Pro²

Camera in front of the loading hatch

Battery on the second 11mm rail behind the loading hatch



ON TOP assembly of the VIASS Pro²

Camera and battery together on a front 11mm rail



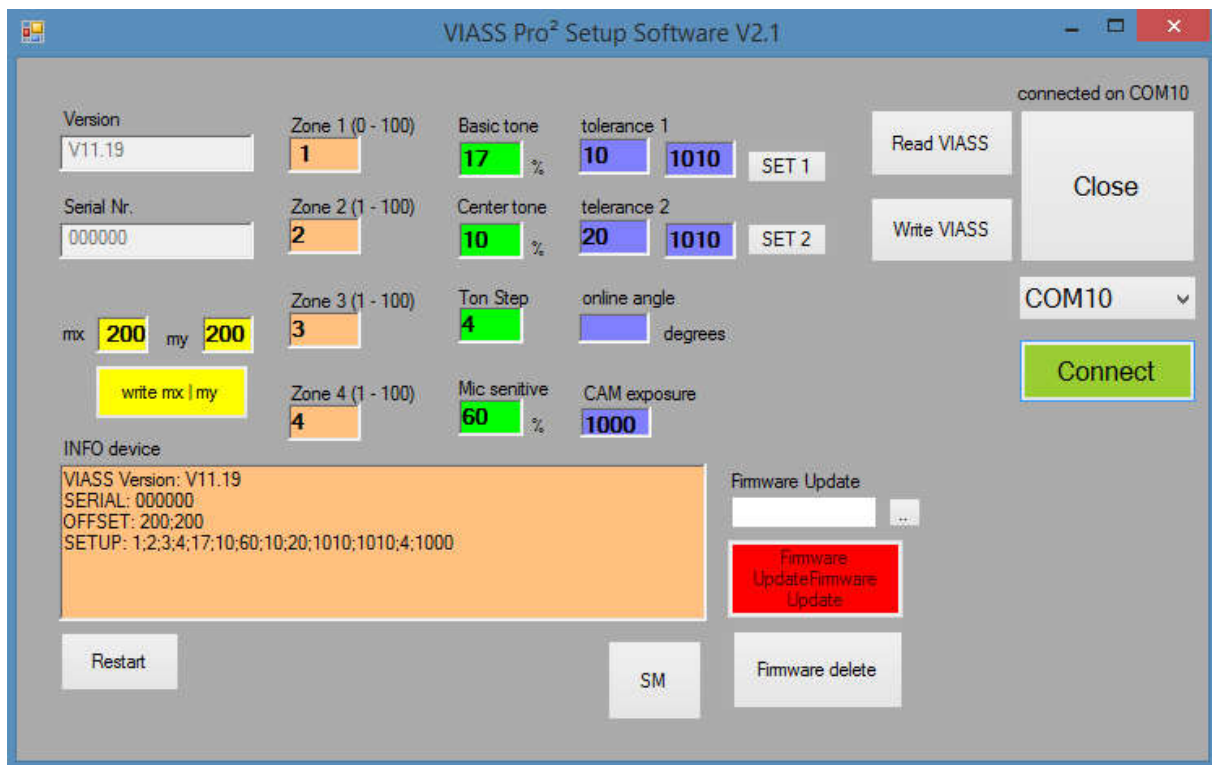
New function

In addition to the almost twice as high resolution (accuracy) of the VIASS Pro 1, there is also an additional inclination sensor that monitors the inclination of the rifle. The athlete has the option of defining two angles and the associated maximum possible tilt angles. The camera informs the shooter via an additional higher tone and via the red status LED that he is outside the predefined angle. This allows the shooter to monitor and train his rifle posture. The misalignment is very noticeable in the result, as the IR-LED is 6cm below the center.

The two pitches and the gradation between the individual tones can now be set much more clearly using the configuration software.

The complete firmware of the new VIASS Pro² has been completely revised and improved.

The freely available “shootingmaster” is currently being revised and will be available for download at the beginning of 2021.



Comparison VIASS Pro 1 + 2

